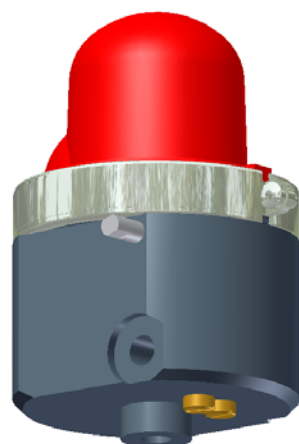


Model 400 System Concept

Note: Pacific Seismic Products, Inc. supplies the Model 400 only; other components depicted here can be sourced separately.

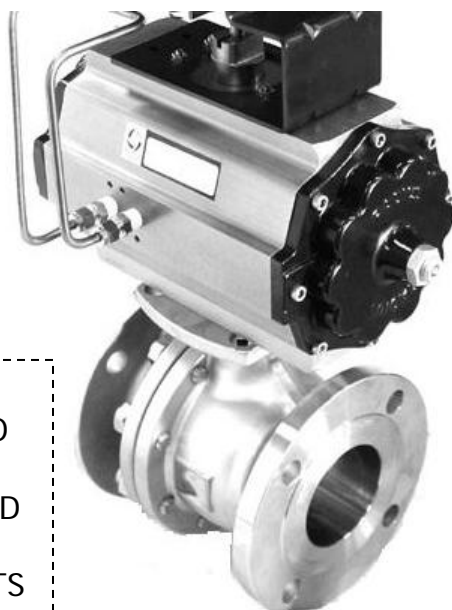
MODEL 400
SEISMIC
ACTUATED VALVE
(80 psi max
operating pressure)



DRY
NITROGEN
SUPPLY
REGULATED
UP TO
80 PSI



PNEUMATIC-
SPRING
TYPE
VALVE
ACTUATOR



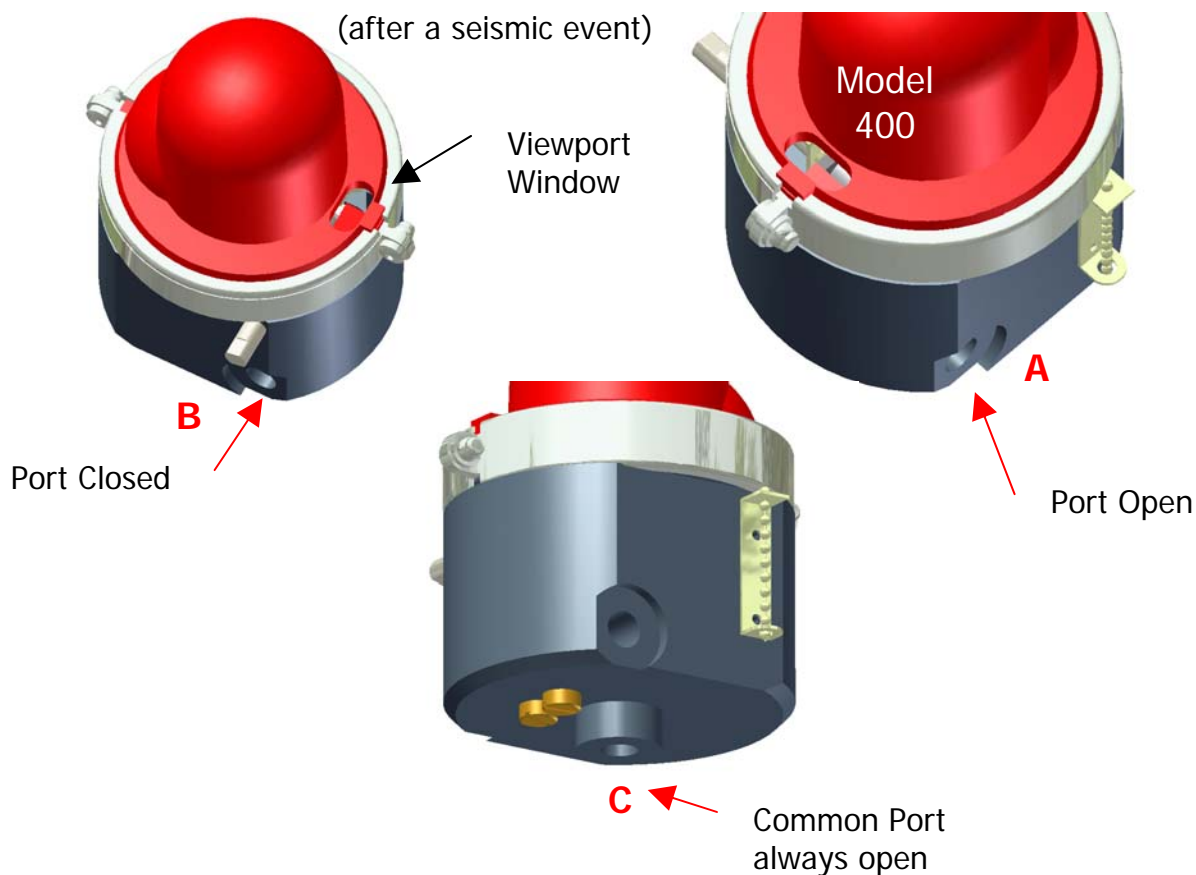
VALVE
SELECTED TO
MATCH
PRESSURE AND
FLUID
REQUIREMENTS
OF APPLICATION

General notes:

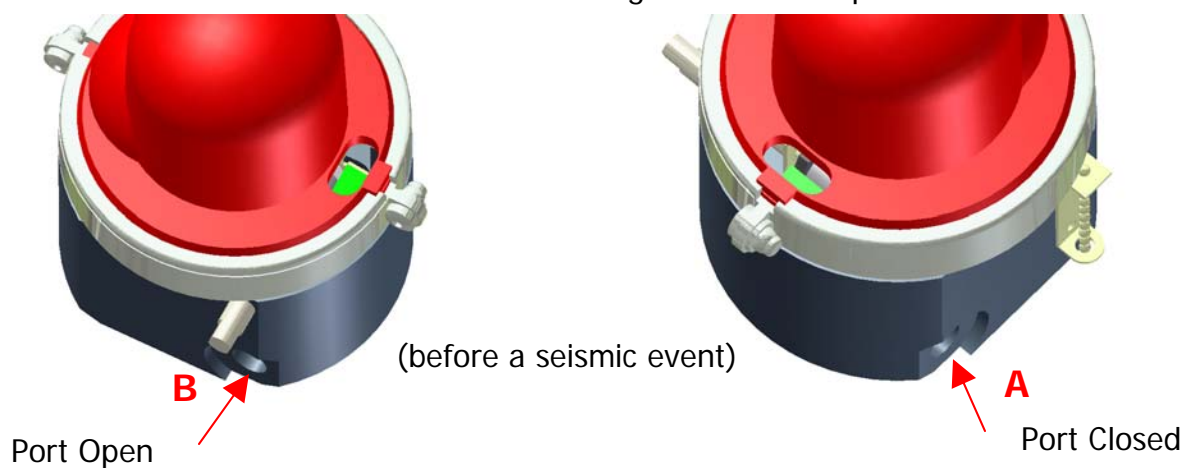
- 1) Mount the Model 400 to a rigid frame or building wall.
- 2) The Model 400 must be installed level for best operational stability.
- 3) The Model 400 can be connected to an Actuator to provide:

-Spring Fail to Close

Port flow condition when RED indicator flag shows in viewport window:



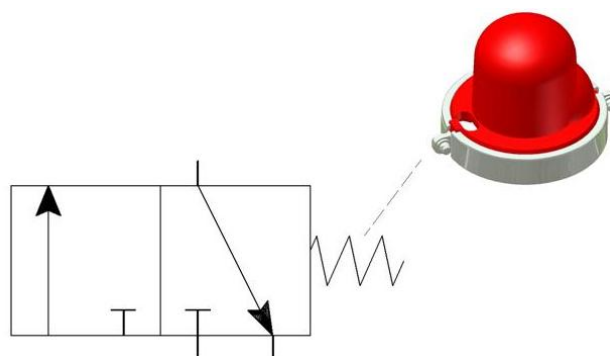
Port flow condition when GREEN indicator flag shows in viewport window:



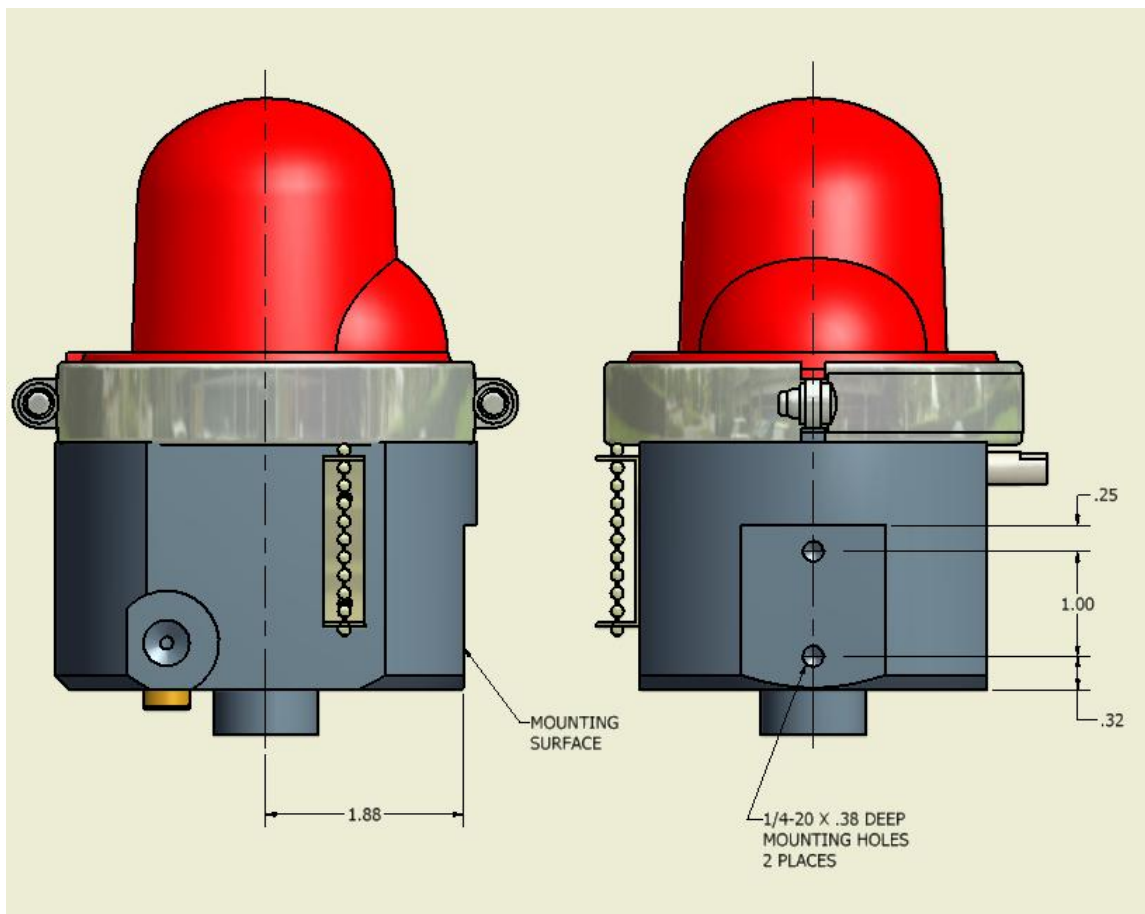
This is a 2-Position, 3-Way valve with spring action "armed" when the view window indicates "green."

The all-mechanical seismic sensor located in the red color dome area operates according to ASCE 25-97.

Reset must be done manually.



Model 400 Seismic Actuated Valve Mounting Detail



Mounting notes:

- Mount level with gravity as indicated by chain level site
 - Mount rigidly so that the valve will shake as much like the earth or building foundation as possible
-